

## Apprenticeship Initial Assessment Policy

Policy Code:	VO6
Policy Start Date:	December 2022
Policy Review Date:	September 2024

Please read this policy in conjunction with the policies listed below:

- VO3 Vocational Assessment and Appeals Procedures Policy
- VO2 Apprenticeship Assessment and Review Policy

## **1 Policy Statement**

- 1.1 The policy applies to all staff at The Priory Federation of Academies Trust and outlines any procedure for the Apprenticeship Initial Assessment.
- 1.2 References to the Trust or Academy within this policy specifically include all primary, secondary and special academies within the Trust, as well as the Early Years setting at the Priory Witham Academy, Priory Apprenticeships and Lincolnshire SCITT.
- 1.3 This policy does not form part of any member of staff's contract of employment and it may be amended at any time.
- 1.4 The Priory Federation of Academies Trust (The Trust) is committed to ensuring that learners are assessed prior to commencement of their apprenticeship to ensure suitability.

## **2 Roles, Responsibilities and Implementation**

- 2.1 The Pay, Performance and HR Committee has overall responsibility for the effective operation of this policy and for ensuring compliance with the relevant statutory framework. This committee delegates day-to-day responsibility for operating the policy and ensuring its maintenance and review to the Human Resources Director.
- 2.2 Leaders and Managers have a specific responsibility to ensure the fair application of this policy and all member of staff are responsible for supporting colleagues and ensuring its success.

## **3 Aims**

- 3.1 To assess learners' prior learning, key skills and understanding to ensure suitability for the chosen apprenticeship.
- 3.2 To carry out initial assessment to ensure that learners are on the most appropriate programme and therefore gather information to support the learners' experience.
- 3.3 To identify the most appropriate referral for any individuals that has been identified as not suitable for an apprenticeship.
- 3.4 To use the most appropriate methods of assessment based on the individual circumstances and targeted **apprenticeships**.
- 3.5 To fully understand the individuals' personal circumstances in key areas.



3.6 To keep the individual fully informed throughout the initial assessment.

#### **4 Range and Scope of the Policy**

The policy covers all apprenticeship-related courses offered within the Trust but may well apply to other vocationally related courses should they become a part of the curriculum in future.

#### **5 Initial Assessment**

Initial assessment focuses on the below, key areas to ensure that we can provide the most appropriate training for the learner. The learner will undergo a formal interview to determine their individual requirements and also undertake assessment to determine their Communications and Calculations levels. The results of the initial assessment will be recorded and discussed with the learner to ensure they understand the interview process and outcome.

##### **5.1 The key areas of assessment**

<p style="text-align: center;"><b><u>Careers Preferences and Suitability</u></b></p> <ul style="list-style-type: none"> <li>• Interview</li> <li>• Application Form</li> <li>• Interview Notes</li> <li>• Information Advice and Guidance (IAG online)</li> </ul>	<p style="text-align: center;"><b><u>Qualifications, Prior learning and Experience</u></b></p> <ul style="list-style-type: none"> <li>• Interview</li> <li>• Application Form</li> <li>• Evidence of certification</li> <li>• Interview Notes</li> </ul>	<p style="text-align: center;"><b><u>Aptitude and Potential</u></b></p> <ul style="list-style-type: none"> <li>• Interview</li> <li>• BKSB Initial Assessment</li> <li>• Occupationally relevant assessment methods</li> <li>• IAG</li> </ul>
<p style="text-align: center;"><b><u>Learning Style</u></b></p> <ul style="list-style-type: none"> <li>• Basic &amp; Key Skills Builder (BKSB)</li> <li>• Initial Assessment</li> <li>• Learning styles questionnaire</li> </ul>	<p style="text-align: center;"><b><u>Basic/Key Skills</u></b></p> <ul style="list-style-type: none"> <li>• Interview</li> <li>• BKSB Initial Assessment</li> </ul>	<p style="text-align: center;"><b><u>Learning Difficulties</u></b></p> <ul style="list-style-type: none"> <li>• Interview</li> <li>• Application Form</li> <li>• Interview Notes</li> </ul>

**Occupational and  
Personal Interest**

- Interview
- Application Form
- Interview Notes
- IAG

**Personal Effectiveness  
and Commitment**

- Interview
- Interview Notes
- Personality traits

**Personal Circumstances**

- Interview
- Interview Notes

Each of the key areas of initial assessment identifies elements that must be considered when determining an individual's suitability/ability for learning. To ensure that a learner is effectively assessed, it is imperative that additional support and guidance is sought from other members of staff as required.

**5.1.1 Career Preferences and Suitability**

The career aims of individuals who are unemployed, or of employed individuals who are not certain they are in the right career area, when they apply for a programme need to be identified. This ensures they have chosen the appropriate occupation area for their learning programme or provides a focus for pre-vocational learning through the sixth form. Career choice is dependent upon many factors including: candidates' qualifications and achievements, abilities, interests, subjects studied at school, skills, knowledge and understanding of their chosen occupation, jobs available in the local labour market, as well as their aptitude to undertake certain types of work.

If an individual remains undecided about an occupational area following initial assessment, work taster programmes where possible should be considered to facilitate their decision making process.

**5.1.2 Qualifications, Prior Learning and Experience**

Information about a learner's qualifications and achievements can provide an indication of their general level of ability. Strengths in certain subject areas may inform their choice of career. This information can help in deciding which programme is most appropriate and whether the level of the planned programme and qualifications are appropriate. Information of existing qualifications may indicate weaknesses in particular areas. For example, the absence of (or low grades in) GCSE maths and English, may suggest Communication and Calculation skills needs which require further investigation during initial assessment. The purpose of establishing a learner's prior experience and learning is to ensure that he or she does not waste time in repeating learning in an area which they are already competent. Equally, learners should not be placed where their prior skills and understanding do not allow them to access the learning effectively.

### 5.1.3 **Aptitude and Potential**

Some learner's educational qualifications and achievements may not reflect their true ability or potential. Failure to achieve education qualifications could be caused by a variety of reasons. Additionally, academic qualifications are not necessarily an indicator of success in vocational learning programmes. A learner's ability and potential needs to be assessed initially so that accurate decisions can be made about the type of programme and level from which they would benefit. We should not deny access to Initial Assessment based on a lack of academic qualifications, without a justified reason.

### 5.1.4 **Learning Styles**

Every learner has a preferred way of learning. Some people learn best by undertaking practical activities; others prefer to read books, whilst others learn by listening or sharing ideas. Many people whose academic learning has been unsuccessful have been taught using teaching styles which do not match their own learning styles.

### 5.1.5 **Communication and Calculation skills**

During initial assessment we identify those learners who require support with Communication and Calculation skills during their programme. Their current level of Communication and Calculation skills will be assessed and the specific area in which they require help and support will be targeted on their Individual Learning Plan (ILP). Where learners follow learning programmes where the achievement of specific key skills are a mandatory requirement, the assessor needs to understand the individual's current level and then identify strengths, weaknesses and current development needs.

### 5.1.6 **Learning Difficulties**

Some learners have specific learning difficulties or disabilities which may necessitate specialist training provision and support. It is vital these are identified during initial assessment so that they are addressed in the ILP or the learner is directed to a more suitable learning provision. This will need to be negotiated in consultation with Priory Apprenticeships, The Trust and/or external stakeholders and employers. No one should be discriminated against anyone because of their disability or any other protected characteristic.

### 5.1.7 **Occupational and Personal Interests**

Identification of occupation interests during initial assessment will facilitate the appropriate placement of unemployed learners. Collecting information on a

learner's hobbies and interests will assist the process of guiding them to make suitable career and training choices

#### 5.1.8 **Personal Effectiveness and Commitment**

Skills in personal effectiveness are important in enhancing the employability of learners. The skills include self-confidence, timekeeping, personal organisation, motivation and presentation. Many learners need to develop these as part of their learning programme or as preparation for entering learning.

#### 5.1.9 **Personal Circumstances**

Some learners have personal problems or issues which need to be addressed during their learning programme. Homelessness, behavioural difficulties, medical conditions, mental health issues, etc. need to be identified at the earliest opportunity so ways can be jointly found to either overcome the problem or find alternative solutions.

#### 5.1.10 **Learner Health Statements**

As part of the initial assessment process, The Trust will collect information on the learner's personal health circumstances to ensure a safe environment is maintained them. This information is recorded on Additional Social Needs document. This information will be treated in accordance with the Data Protection Act 2018, but circumstances may determine information on these documents must be passed to the learner's employer to maintain that safe environment.

To this end, the relevant health information section includes a consent section, whereby the learner authorises us to pass some or all of the health information. The interviewer responsible for carrying out this part of the initial assessment shall explain the relevance of this information in a work environment.

**Under no circumstances shall this information be passed to any other party without the written consent of the learner.**

#### 5.1.11 **Authority to release assessment information**

Following initial assessment, it is possible that Priory Apprenticeships will not be the appropriate provider for the learner, resulting in a further referral. In the interest of the learner it could be of value to forward the result of the assessment on to the referred agency, with the learner's permission.

Priory Apprenticeships shall **not** release any information to other agencies without written permission from the learner in line with the Data Protection legislation guidelines.

## 5.2 **Learning styles**

Basic & Key Skills Builder (BKSB) can assess the learner's primary learning style as part of the initial assessment and we will endeavour to deliver any in-house/off-the-job training in that style where applicable.

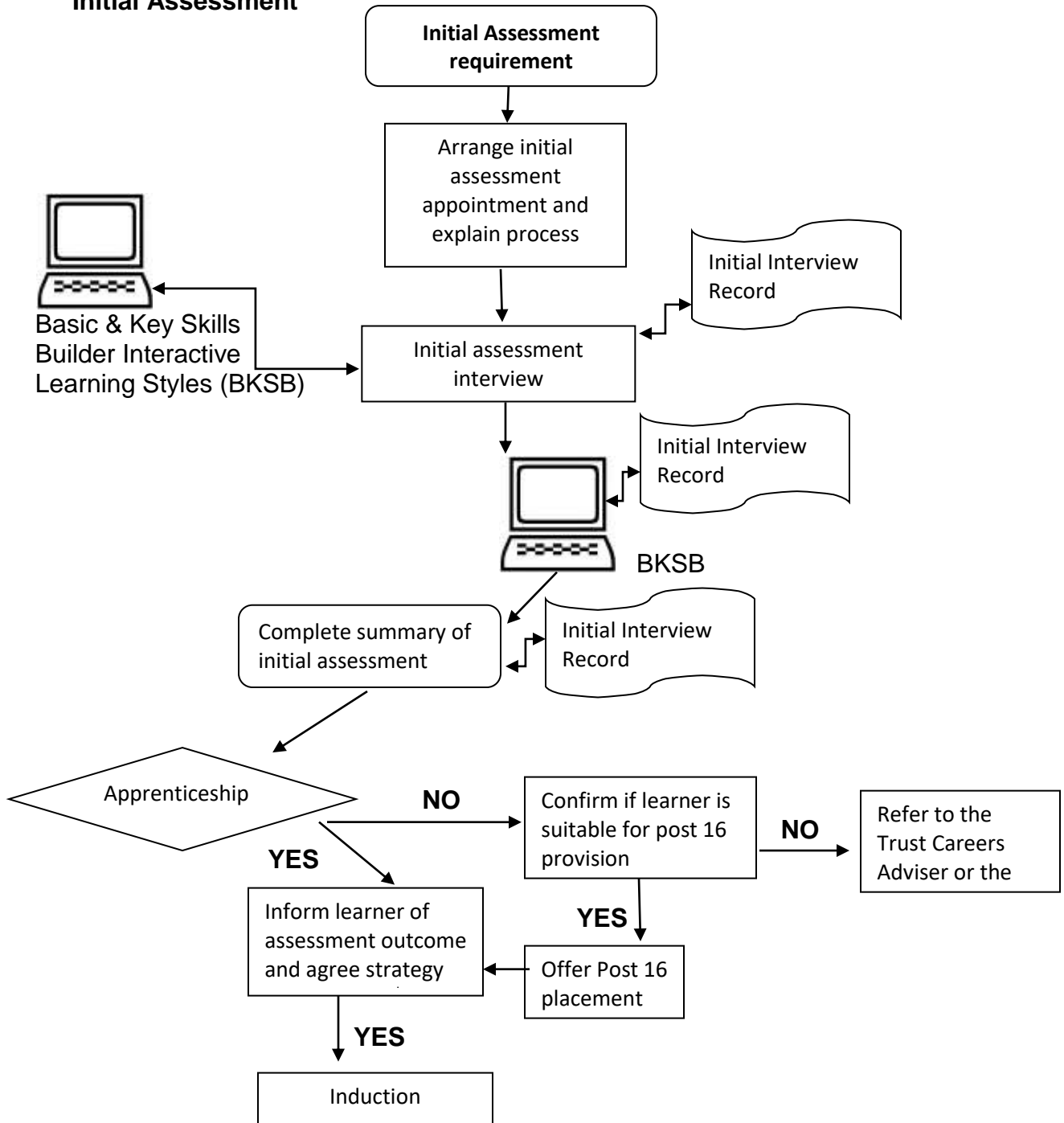
The results of the BKSB Interactive Learning Styles assessment should be recorded on the ILP and a printed record of the assessment included in the learner's file.

Priory Apprenticeships will inform employers of the learner's primary learning style so they can make provision to deliver continued training in that manner.

## 5.3 **English for Speakers of Other Languages (ESOL)**

Where learners speak languages other than English, Priory Apprenticeships will identify any barriers to learning linked to lack of understanding of English to ensure that appropriate provision is made for the learner. Language requirements will be recorded on the learner's interview notes and then transferred to the ILP when the learner starts their programme.

**5.4 Initial Assessment**





## 6 Assessment Tools will amend to current courses and forward on

6.1 Priory Apprenticeships will use the Basic and Key Skills Builder Assessment tool (BKSB) to determine the level of the learner’s Communication and Calculation skills. There are occupation specific assessment tools, as follows:

<u>Programme</u>	<u>Assessment Tool</u>	<u>What it Assesses</u>
Apprenticeship and Advanced Apprenticeship	Basic and Key Skills Builder Initial Assessment  Interview	Basic and Key Skills Builder Initial Assessment is a diagnostic tool which has been developed to provide a guideline to a learner’s current level of key skills in application of number and communication. This assessment tool is based on the Adult Literacy & Numeracy Standards (2000) and can be used to endorse learners.  It comes complete with workbooks and skills checks  Personality, previous experience, attitude, behaviour
Motor Vehicle Apprenticeships	Work trial with prospective employer	Aptitude, personality, occupational awareness, Health & Safety awareness, commitment
Construction Apprenticeships	Initial assessment	Health & Safety awareness, personality, previous experience, attitude, behaviour
Business Administration Apprenticeships	In-tray exercise	Ability to prioritise work and how to handle administrative tasks
Teaching Assistant Apprenticeships	Work trial with prospective employer	Aptitude, personality, occupational awareness, commitment

Site Maintenance Apprenticeship	Work trial with prospective employer	Health & Safety awareness, personality, previous experience, attitude, behaviour
Catering	Work trial with prospective employer	Food hygiene awareness, personality, previous experience, attitude, behaviour

6.

**Note 6:** Results recorded on Individual Learning Plan (ILP)

## 7 Transition from Initial Assessment

Priory Apprenticeships will ensure that the learner fully understands the possible outcome(s) available to them and will agree the most suitable course of action with them. These outcomes will be based on the output of this procedure supported by qualified and competent tutors and interviewers.

If the learner has been offered a place and already has a job then they will transition to the Sign-Up Phase and their ILP will be developed based on the output of this procedure.

Should it be agreed a place within Priory Apprenticeships is not the best solution for the learner, then the learner will be referred to Sixth Form, Careers Advisor or the local Job Centre and a copy of the relevant assessment documentation be made available for any other agency or provider to assist them in identifying the most appropriate pathway for the learner (when authorised to do so).

## 8 Policy changes

This policy may only be amended or withdrawn by The Priory Federation of Academies Trust.



## **The Priory Federation of Academies Trust Apprenticeship Initial Assessment Policy**

This Policy has been approved by the Priory Federation of Academies Trust's Education and Standards Committee:

Signed..... Name..... Date:

Trustee

Signed..... Name..... Date:

Chief Executive Officer

Signed..... Name..... Date:

Designated Member of Staff

Please note that a signed copy of this agreement is available via Human Resources.